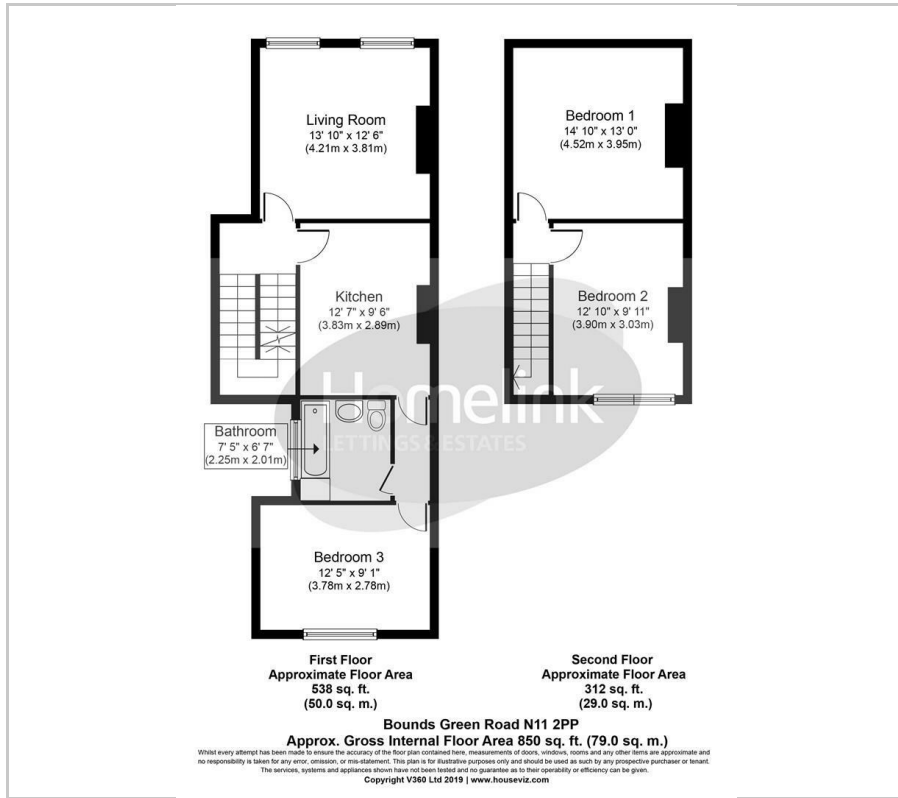




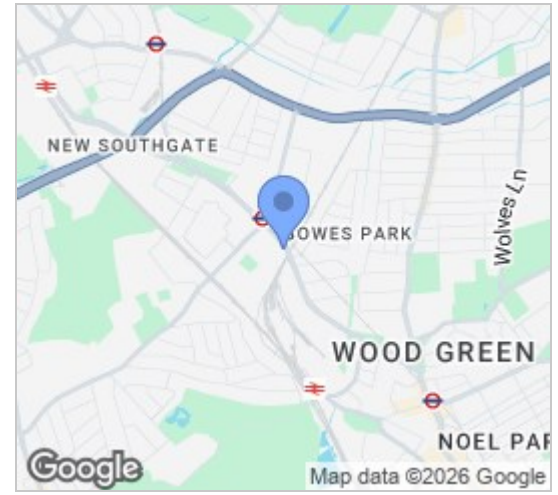
Bounds Green Road, Bounds Green, N11

£2,100 PCM

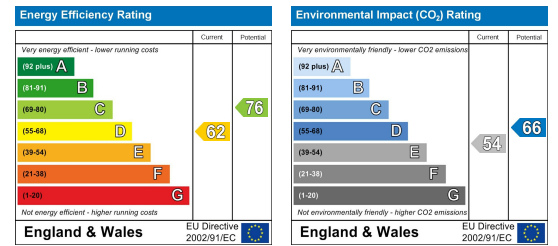
Floor Plan



Area Map



Energy Efficiency Graph



Viewing

Please contact our Homelink Lettings & Estates Office on 0208 882 2112 if you wish to arrange a viewing appointment for this property or require further information.

- Three Double Bedrooms
- New fitted Kitchen
- Split Level
- Dbi Glazed + Gas C/H
- Council tax band - E
- Separate Large Lounge
- New Fitted Bathroom
- Close to Bounds Green underground station
- Newly Refurbished
- Council tax amount - £2,771.60 -26/27



****THREE DOUBLE BEDROOM FLAT** **SPLIT LEVEL PROPERTY**** Nestled on Bounds Green Road in the charming area of Bounds Green, N11, this delightful three bedroom split-level flat presents an excellent opportunity for working professionals seeking a comfortable and convenient living space. Boasting three generously sized double bedrooms, this property is perfect for those who value both space and functionality.

The flat features a well-appointed reception room, providing a welcoming area for relaxation or entertaining guests. The property also includes a modern bathroom, ensuring that all essential amenities are readily available. Recently painted, the flat offers a fresh and inviting atmosphere, ready for you to make it your own.

One of the standout features of this property is its prime location. Situated just a short distance from Bounds Green Underground station, residents will benefit from excellent transport links, making commuting to central London and beyond a breeze. The surrounding area is also rich in local amenities, including shops, cafes, and parks, providing a vibrant community feel.

This property is available for immediate occupancy, making it an ideal choice for those looking to move in without delay. With its spacious layout, convenient location, and modern finishes, this flat is a fantastic option for anyone seeking a new home in Bounds Green. Don't miss the chance to view this exceptional property.

Council tax band - E - Haringey.
Council tax amount - £2,771.60 -26/27



These particulars, whilst believed to be accurate are set out as a general outline only for guidance and do not constitute any part of an offer or contract. Intending purchasers should not rely on them as statements of representation of fact, but must satisfy themselves by inspection or otherwise as to their accuracy. No person in this firm's employment has the authority to make or give any representation or warranty in respect of the property.

Homelink Lettings and Estates
62 Chase Side, London N14 5PA
0208 882 2112 homelink.co.uk

